

VAIL-60S-WALL

Product Features

The VAIL-60S-WALL collection is a set of standard sizes of large wall mounted aluminum extrusion frames. The VAIL-60S is a single-sided aluminum extrusion with a profile width of 60mm (2.4 in.) and a sleek silver anodized finish. Custom dye sublimated fabric graphics install easily with SEG (silicone edge graphics) finishing. Simply tuck the silicone beading into each corner of the frame and then work your way around the edges of the frame to complete graphic installation.

Specs

Profile Specifications:

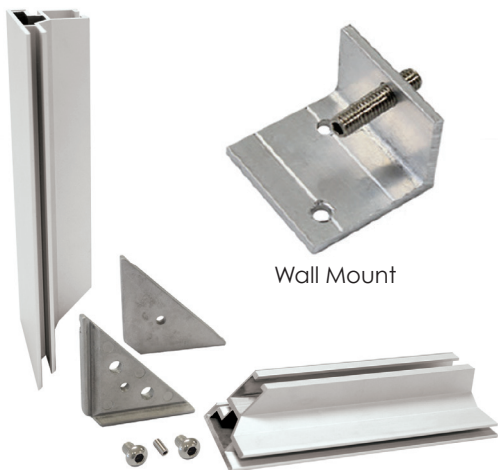
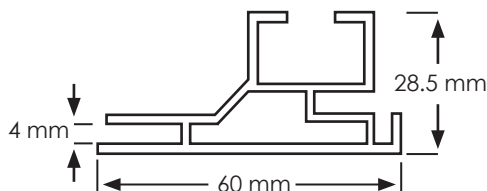
- 60 mm (2.4 in) wide aluminum profile
- Silver anodized finish
- Single-sided graphic display
- Includes wall mounts
- Accepts 3mm x 12 mm keder

Features:

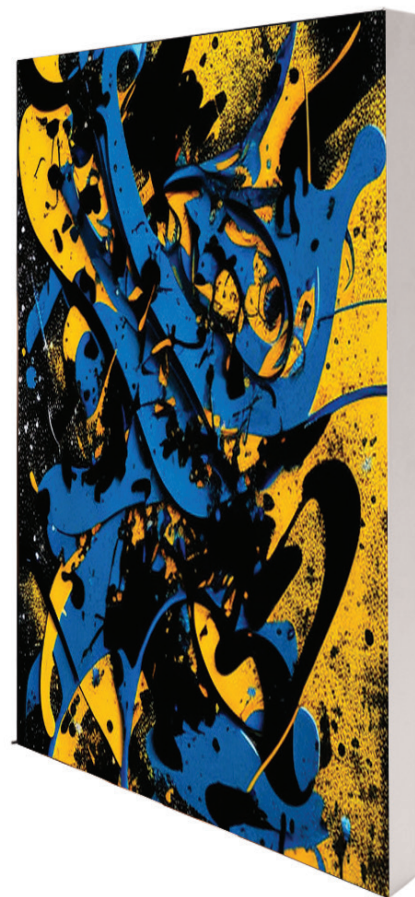
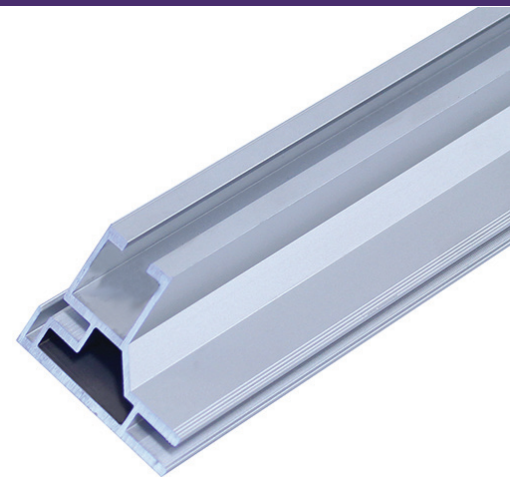
- Wall Mounted SEG Frame
- Material: Stretch Fabric
- Print Process: Paper Transfer Dye Sublimation
- SEG finishing (Silicone Edge Graphics)
- Warranty: One (1) year on graphics
Lifetime on hardware

Product Applications:

- Wall decoration for home & office
- Retail store wall advertising
- Locker rooms
- and Much more



Corner Connector
SKU: VAIL-CRNR



VAIL-60S-WALL

PARTS LISTS

8x12

Part	qty
96" VAIL-60S Profile	2
72" VAIL-60S Profile	4
36" VAIL-MAM-40C	2
48" VAIL-MAM-40C	4
AF-CENTCON	2
AF-SLIM-WALLMT	16
VAIL-CRNR	4
ALLEN-4mm	1

9x12

Part	qty
54" VAIL-60S Profile	4
72" VAIL-60S Profile	4
36" VAIL-MAM-40C	2
54" VAIL-MAM-40C	4
AF-CENTCON	4
AF-SLIM-WALLMT	16
VAIL-CRNR	4
ALLEN-4mm	1

10x12

Part	qty
60" VAIL-60S Profile	4
72" VAIL-60S Profile	4
36" VAIL-MAM-40C	2
60" VAIL-MAM-40C	4
AF-CENTCON	4
AF-SLIM-WALLMT	8
VAIL-CRNR	4
ALLEN-4mm	1

8x15

Part	qty
96" VAIL-60S Profile	2
90" VAIL-60S Profile	4
45" VAIL-MAM-40C	2
48" VAIL-MAM-40C	4
AF-CENTCON	2
AF-SLIM-WALLMT	16
VAIL-CRNR	4
ALLEN-4mm	1

9x15

Part	qty
54" VAIL-60S Profile	4
90" VAIL-60S Profile	4
45" VAIL-MAM-40C	2
54" VAIL-MAM-40C	4
AF-CENTCON	4
AF-SLIM-WALLMT	16
VAIL-CRNR	4
ALLEN-4mm	1

10x15

Part	qty
60" VAIL-60S Profile	4
90" VAIL-60S Profile	4
45" VAIL-MAM-40C	2
60" VAIL-MAM-40C	4
AF-CENTCON	4
AF-SLIM-WALLMT	16
VAIL-CRNR	4
ALLEN-4mm	1

8x20

Part	qty
96" VAIL-60S Profile	2
60" VAIL-60S Profile	8
60" VAIL-MAM-40C	2
48" VAIL-MAM-40C	4
AF-CENTCON	6
AF-SLIM-WALLMT	16
VAIL-CRNR	4
ALLEN-4mm	1

9x20

Part	qty
54" VAIL-60S Profile	4
60" VAIL-60S Profile	8
60" VAIL-MAM-40C	2
54" VAIL-MAM-40C	4
VAIL-CRNR	6
AF-SLIM-WALLMT	16
VAIL-CRNR	4
ALLEN-4mm	1

10x20

Part	qty
60" VAIL-60S Profile	4
60" VAIL-60S Profile	8
60" VAIL-MAM-40C	6
AF-CENTCON	6
AF-SLIM-WALLMT	16
VAIL-CRNR	4
ALLEN-4mm	1

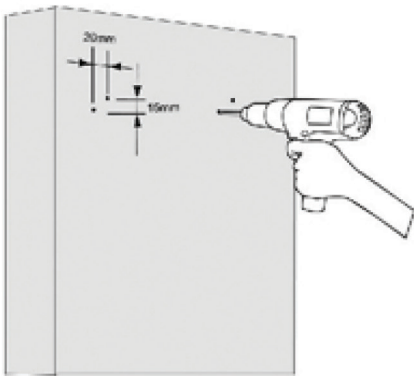
VAIL-60S-WALL

SHIPPING INFORMATION

SKU	Description	Ship Weight	Ship Dimensions
VAIL60S-WALL-8X12GP	8 x 12ft Resort Extrusions: Vail-60S Single-Sided Wall Mount (Graphic Package)	51	96 1/2" L x 6 13/16" W x 6 15/16" D
VAIL60S-WALL-8X12GO	8 x 12ft Resort Extrusions: Vail-60S Single-Sided Wall Mount (Graphic Only)	5	Poly Bag
VAIL60S-WALL-8X12HO	8 x 12ft Resort Extrusions: Vail-60S Single-Sided Wall Mount (Hardware Only)	46	96 1/2" L x 6 13/16" W x 6 15/16" D
VAIL60S-WALL-8X15GP	8 x 15ft Resort Extrusions: Vail-60S Single-Sided Wall Mount (Graphic Package)	57	96 1/2" L x 6 13/16" W x 6 15/16" D
VAIL60S-WALL-8X15GO	8 x 15ft Resort Extrusions: Vail-60S Single-Sided Wall Mount (Graphic Only)	7	Poly Bag
VAIL60S-WALL-8X15HO	8 x 15ft Resort Extrusions: Vail-60S Single-Sided Wall Mount (Hardware Only)	50	96 1/2" L x 6 13/16" W x 6 15/16" D
VAIL60S-WALL-8X20GP	8 x 20ft Resort Extrusions: Vail-60S Single-Sided Wall Mount (Graphic Package)	77	96 1/2" L x 6 13/16" W x 6 15/16" D
VAIL60S-WALL-8X20GO	8 x 20ft Resort Extrusions: Vail-60S Single-Sided Wall Mount (Graphic Only)	10	Poly Bag
VAIL60S-WALL-8X20HO	8 x 20ft Resort Extrusions: Vail-60S Single-Sided Wall Mount (Hardware Only)	67	96 1/2" L x 6 13/16" W x 6 15/16" D
VAIL60S-WALL-9X12GP	9 x 12ft Resort Extrusions: Vail-60S Single-Sided Wall Mount (Graphic Package)	56	72 1/2" L x 6 3/4" W x 6 1/4" D
VAIL60S-WALL-9X12GO	9 x 12ft Resort Extrusions: Vail-60S Single-Sided Wall Mount (Graphic Only)	6	Poly Bag
VAIL60S-WALL-9X12HO	9 x 12ft Resort Extrusions: Vail-60S Single-Sided Wall Mount (Hardware Only)	50	72 1/2" L x 6 3/4" W x 6 1/4" D
VAIL60S-WALL-9X15GP	9 x 15ft Resort Extrusions: Vail-60S Single-Sided Wall Mount (Graphic Package)	62	96 1/2" L x 6 13/16" W x 6 15/16" D
VAIL60S-WALL-9X15GO	9 x 15ft Resort Extrusions: Vail-60S Single-Sided Wall Mount (Graphic Only)	8	Poly Bag
VAIL60S-WALL-9X15HO	9 x 15ft Resort Extrusions: Vail-60S Single-Sided Wall Mount (Hardware Only)	54	96 1/2" L x 6 13/16" W x 6 15/16" D
VAIL60S-WALL-9X20GP	9 x 20ft Resort Extrusions: Vail-60S Single-Sided Wall Mount (Graphic Package)	77	72 1/2" L x 6 3/4" W x 6 1/4" D
VAIL60S-WALL-9X20GO	9 x 20ft Resort Extrusions: Vail-60S Single-Sided Wall Mount (Graphic Only)	10	Poly Bag
VAIL60S-WALL-9X20HO	9 x 20ft Resort Extrusions: Vail-60S Single-Sided Wall Mount (Hardware Only)	67	72 1/2" L x 6 3/4" W x 6 1/4" D
VAIL60S-WALL-10X12GP	10 x 12ft Resort Extrusions: Vail-60S Single-Sided Wall Mount (Graphic Package)	58	72 1/2" L x 6 3/4" W x 6 1/4" D
VAIL60S-WALL-10X12GO	10 x 12ft Resort Extrusions: Vail-60S Single-Sided Wall Mount (Graphic Only)	7	Poly Bag
VAIL60S-WALL-10X12HO	10 x 12ft Resort Extrusions: Vail-60S Single-Sided Wall Mount (Hardware Only)	51	72 1/2" L x 6 3/4" W x 6 1/4" D
VAIL60S-WALL-10X15GP	10 x 15ft Resort Extrusions: Vail-60S Single-Sided Wall Mount (Graphic Package)	64	96 1/2" L x 6 13/16" W x 6 15/16" D
VAIL60S-WALL-10X15GO	10 x 15ft Resort Extrusions: Vail-60S Single-Sided Wall Mount (Graphic Only)	8	Poly Bag
VAIL60S-WALL-10X15HO	10 x 15ft Resort Extrusions: Vail-60S Single-Sided Wall Mount (Hardware Only)	54	96 1/2" L x 6 13/16" W x 6 15/16" D
VAIL60S-WALL-10X20GP	10 x 20ft Resort Extrusions: Vail-60S Single-Sided Wall Mount (Graphic Package)	80	72 1/2" L x 6 3/4" W x 6 1/4" D
VAIL60S-WALL-10X20GO	10 x 20ft Resort Extrusions: Vail-60S Single-Sided Wall Mount (Graphic Only)	11	Poly Bag
VAIL60S-WALL-10X20HO	10 x 20ft Resort Extrusions: Vail-60S Single-Sided Wall Mount (Hardware Only)	69	72 1/2" L x 6 3/4" W x 6 1/4" D

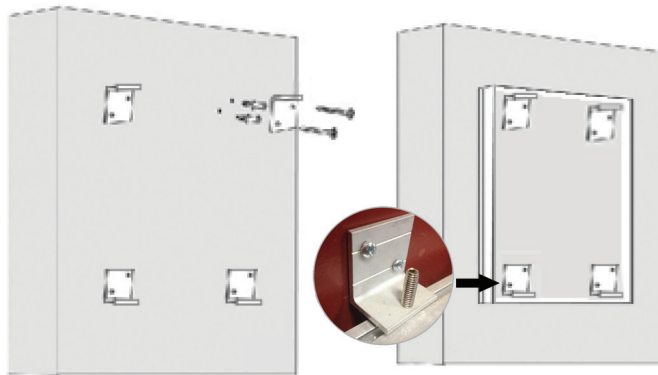
VAIL-60S-WALL

WALL MOUNT INSTALLATION INSTRUCTIONS



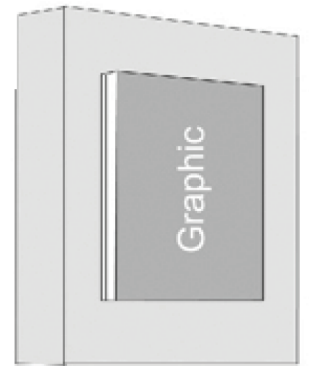
Position the wall mounts on the wall close enough for the threaded screw to be able to apply pressure to the frame. Space them evenly across the top and bottom edges of the inside edges of the frame. Mark the hole locations with a pen or marker and drill holes large enough to fit the plastic screw anchors.

*There will be 8 wall mounts across the top and 8 wall mounts across the bottom.



Insert wall anchors into holes, place wall mount over wall anchors making sure holes on mounts line up with anchors. Insert screws into holes and tighten them with a screwdriver to secure.

Tighten allen key screws on wall mounts to apply pressure to the frame. Repeat for all wall mounts to secure frame to the wall.



Install your graphic by tucking the silicone beading into each corner of the frame and then working your way around the edges of the frame to complete graphic installation.