

VAIL - 180D

RESORT EXTRUSIONS

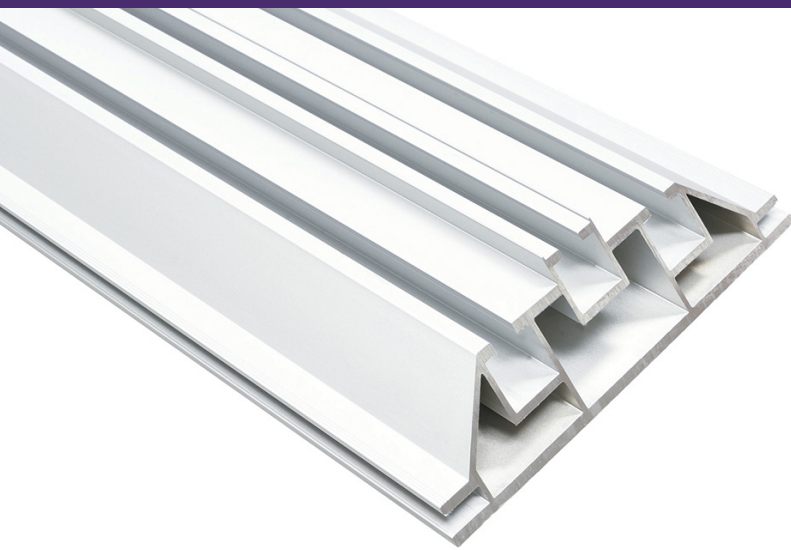
PRODUCT CODE: VAIL-180D



Free Standing Option

Backlit Option

Tool Free Option



Product Features

The VAIL-180D is a double-sided extrusion with a profile width of 180 mm (7.09 in.). Having a solid outside finish, VAIL-180D is the widest Resort Extrusion that is best used as a free-standing display. Connecting hardware is doubled-up on the Vail-180D for maximum sturdiness. The spine of the VAIL-180D gives 3 different placements for inserting connecting hardware, or for lights as desired. When installing the fabric graphic, the silicone beading can fit slightly more than 12 mm (.47 in.) deep and 3 mm (.11 in) wide into the silicone beading trough. This extrusion is compatible with edge-lights or ladder lights (can be back-lit).

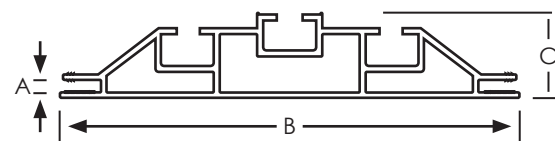
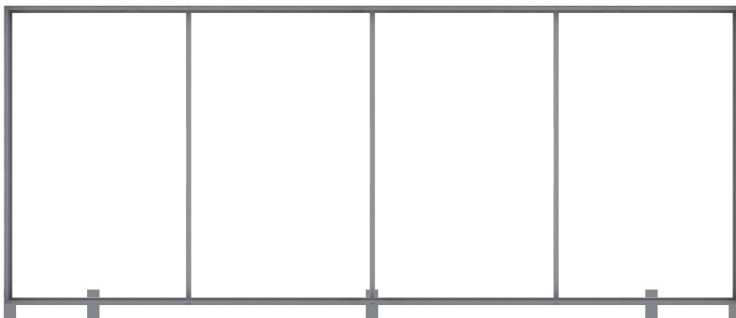
Specs

Specifications:

- 180mm.(7.0in.) wide aluminum profile
- Designed for large graphic display
- Double-sided graphic display
- Accepts 12mm x 3mm.keder
- Freestanding display
- Backlit and non-backlit options available

Features:

- Material: Stretch Fabric or Dye Sub Backlit
- Print Process: Paper Transfer Dye Sub Printing
- Warranty: One (1) year on graphics
Lifetime on hardware
- Shipping Weight: Varies Depending on Size*
- Shipping Dimensions: Varies Depending on Size*



A = 4 mm.

B = 180 mm.

C = 34 mm.



Tool Free Locks



Optional LED Edge Lights

| Standard Frame Sizes (W' x H') | | |
|--------------------------------|---------|---------|
| 8 x 10 | 11 x 8 | 20 x 8 |
| 8 x 11 | 11 x 9 | 20 x 9 |
| 8 x 12 | 11 x 10 | 20 x 10 |
| 9 x 10 | 12 x 8 | 25 x 8 |
| 9 x 11 | 12 x 9 | 25 x 9 |
| 9 x 12 | 12 x 10 | 25 x 10 |
| 10 x 8 | 15 x 8 | 30 x 8 |
| 10 x 9 | 15 x 9 | 30 x 9 |
| 10 x 10 | 15 x 10 | 30 x 10 |

VAIL - 180D

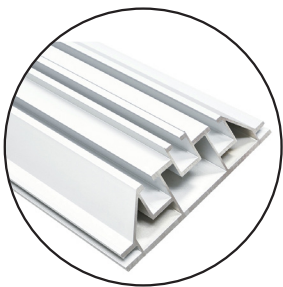
RESORT EXTRUSIONS

PRODUCT CODE: VAIL-180D

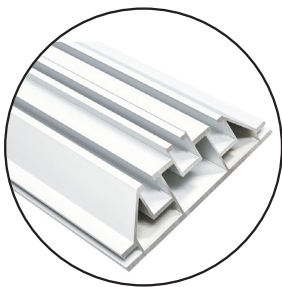


PARTS LIST

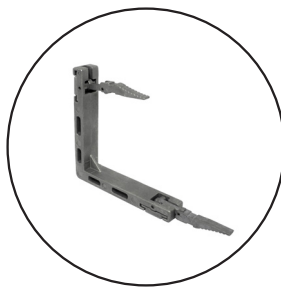
| Frame Size | Horizontal VAIL-180D | Vertical VAIL-180D | RESORT-TFCRNR | RESORT-TFCNT | VAIL-MAM-40C | ALPINE-42H-CENTCON | VAIL-SF-SET | VAIL-BF | ALLEN-4mm | LACAJA |
|------------|----------------------|--------------------|---------------|--------------|--------------|--------------------|-------------|---------|-----------|--------|
| 8 x 10 | 4 | 4 | 8 | 4 | 2 | 1 | 2 | 2 | 1 | 1 |
| 8 x 11 | 4 | 4 | 8 | 4 | 2 | 1 | 2 | 2 | 1 | 1 |
| 8 x 12 | 4 | 4 | 8 | 4 | 2 | 1 | 2 | 2 | 1 | 1 |
| 9 x 10 | 4 | 4 | 8 | 4 | 2 | 1 | 2 | 2 | 1 | 1 |
| 9 x 11 | 4 | 4 | 8 | 4 | 2 | 1 | 2 | 2 | 1 | 1 |
| 9 x 12 | 4 | 4 | 8 | 4 | 2 | 1 | 2 | 2 | 1 | 1 |
| 10 x 8 | 4 | 4 | 8 | 8 | 2 | 1 | 2 | 2 | 1 | 1 |
| 10 x 9 | 4 | 4 | 8 | 8 | 2 | 1 | 2 | 2 | 1 | 1 |
| 10 x 10 | 4 | 4 | 8 | 8 | 2 | 1 | 2 | 2 | 1 | 1 |
| 11 x 8 | 4 | 6 | 8 | 12 | 4 | 2 | 2 | 2 | 1 | 1 |
| 11 x 9 | 4 | 6 | 8 | 12 | 4 | 2 | 2 | 2 | 1 | 1 |
| 11 x 10 | 4 | 6 | 8 | 12 | 4 | 2 | 2 | 2 | 1 | 1 |
| 12 x 8 | 4 | 6 | 8 | 12 | 4 | 2 | 2 | 3 | 1 | 1 |
| 12 x 9 | 4 | 6 | 8 | 12 | 4 | 2 | 2 | 3 | 1 | 1 |
| 12 x 10 | 4 | 6 | 8 | 12 | 4 | 2 | 2 | 3 | 1 | 1 |
| 15 x 8 | 6 | 6 | 8 | 12 | 4 | 2 | 2 | 3 | 1 | 1 |
| 15 x 9 | 6 | 6 | 8 | 12 | 4 | 2 | 2 | 3 | 1 | 1 |
| 15 x 10 | 6 | 6 | 8 | 12 | 4 | 2 | 2 | 3 | 1 | 1 |
| 20 x 8 | 8 | 8 | 8 | 16 | 6 | 3 | 2 | 4 | 1 | 2 |
| 20 x 9 | 8 | 8 | 8 | 16 | 6 | 3 | 2 | 4 | 1 | 2 |
| 20 x 10 | 8 | 8 | 8 | 16 | 6 | 3 | 2 | 4 | 1 | 2 |
| 25 x 8 | 10 | 10 | 8 | 20 | 8 | 4 | 2 | 5 | 1 | 2 |
| 25 x 9 | 10 | 10 | 8 | 20 | 8 | 4 | 2 | 5 | 1 | 2 |
| 25 x 10 | 10 | 10 | 8 | 20 | 8 | 4 | 2 | 5 | 1 | 2 |
| 30 x 8 | 12 | 12 | 8 | 24 | 10 | 5 | 2 | 6 | 1 | 2 |
| 30 x 9 | 12 | 12 | 8 | 24 | 10 | 5 | 2 | 6 | 1 | 2 |
| 30 x 10 | 12 | 12 | 8 | 24 | 10 | 5 | 2 | 6 | 1 | 2 |



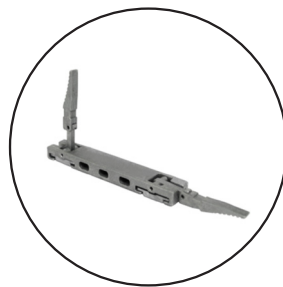
Horizontal Profile
SKU: VAIL-180D



Horizontal Profile
SKU: VAIL-180D



Resort Tool Free Corner
SKU: RESORT-TFCRNR



Resort Tool Free Center Connector
SKU: RESORT-TFCNT



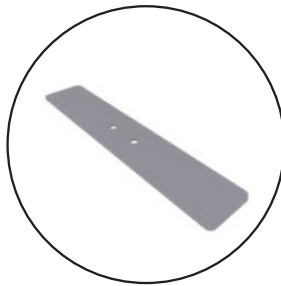
Center Support Strut
SKU: VAIL-MAM-40C



Support Strut Split Connector
SKU: ALPINE-42H-CENTCON



Vail Side Foot
SKU: VAIL-SF-SET



Vail Bottom Foot
SKU: VAIL-BF



Allen Key 4mm
SKU: ALLEN-4mm



La Caja Hardcase
SKU: LACAJA



Free Standing Option

Backlit Option

Tool Free Option

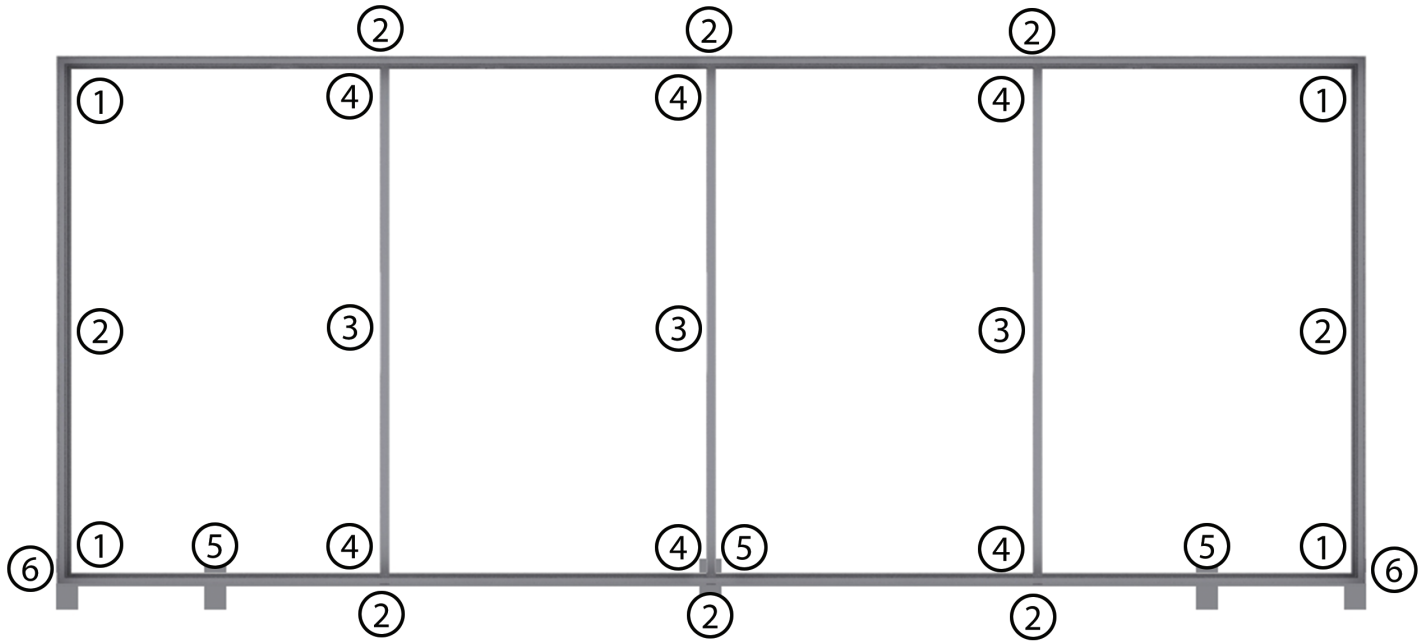
SHIPPING INFO

| Frame Size | Box Dims | Box Qty | Weight (lbs) |
|-----------------------------------|-------------------|---------|--------------|
| Vail180DB-8x10GO | Poly Bag | 1 | 4 |
| Vail180DB-8x10GP | 67" x 18" x 11.5" | 1 | 50 |
| Vail180DB-8x10HQ | 67" x 18" x 11.5" | 1 | 42 |
| Vail180DB-8x11GO | Poly Bag | 1 | 5 |
| Vail180DB-8x11GP | 67" x 18" x 11.5" | 1 | 57 |
| Vail180DB-8x11HQ | 67" x 18" x 11.5" | 1 | 47 |
| Vail180DB-8x12GO | Poly Bag | 1 | 5 |
| Vail180DB-8x12GP | 67" x 18" x 11.5" | 1 | 58 |
| Vail180DB-8x12HQ | 67" x 18" x 11.5" | 1 | 48 |
| Vail180DB-9x10GO | Poly Bag | 1 | 6 |
| Vail180DB-9x10GP | 67" x 18" x 11.5" | 1 | 51 |
| Vail180DB-9x10HQ | 67" x 18" x 11.5" | 1 | 39 |
| Vail180DB-9x11GO | Poly Bag | 1 | 5 |
| Vail180DB-9x11GP | 67" x 18" x 11.5" | 1 | 58 |
| Vail180DB-9x11HQ | 67" x 18" x 11.5" | 1 | 48 |
| Vail180DB-9x12GO | Poly Bag | 1 | 6 |
| Vail180DB-9x12GP | 67" x 18" x 11.5" | 1 | 61 |
| Vail180DB-9x12HQ | 67" x 18" x 11.5" | 1 | 49 |
| Vail180DB-10x8GO | Poly Bag | 1 | 4 |
| Vail180DB-10x8GP | 67" x 18" x 11.5" | 1 | 50 |
| Vail180DB-10x8HQ | 67" x 18" x 11.5" | 1 | 42 |
| Vail180DB-10x9GO | Poly Bag | 1 | 5 |
| Vail180DB-10x9GP | 67" x 18" x 11.5" | 1 | 53 |
| Vail180DB-10x9HQ | 67" x 18" x 11.5" | 1 | 43 |
| Vail180DB-10x10GO | Poly Bag | 1 | 5 |
| Vail180DB-10x10GP | 67" x 18" x 11.5" | 1 | 62 |
| Vail180DB-10x10HQ | 67" x 18" x 11.5" | 1 | 52 |
| Vail180DB-11x8GO | Poly Bag | 1 | 5 |
| Vail180DB-11x8GP | 67" x 18" x 11.5" | 1 | 62 |
| Vail180DB-11x8HQ | 67" x 18" x 11.5" | 1 | 52 |
| Vail180DB-11x9GO | Poly Bag | 1 | 5 |
| Vail180DB-11x9GP | 67" x 18" x 11.5" | 1 | 63 |
| Vail180DB-11x9HQ | 67" x 18" x 11.5" | 1 | 53 |
| Vail180DB-11x10GO | Poly Bag | 1 | 6 |
| Vail180DB-11x10GP | 67" x 18" x 11.5" | 1 | 66 |
| Vail180DB-11x10HQ | 67" x 18" x 11.5" | 1 | 54 |
| Vail180DB-12x8GO | Poly Bag | 1 | 5 |
| Vail180DB-12x8GP | 67" x 18" x 11.5" | 1 | 65 |
| Vail180DB-12x8HQ | 67" x 18" x 11.5" | 1 | 55 |
| Vail180DB-12x9GO | Poly Bag | 1 | 6 |
| Vail180DB-12x9GP | 67" x 18" x 11.5" | 1 | 69 |
| Vail180DB-12x9HQ | 67" x 18" x 11.5" | 1 | 57 |

| Frame Size | Box Dims | Box Qty | Weight (lbs) |
|-----------------------------------|-------------------|---------|--------------|
| Vail180DB-12x10GO | Poly Bag | 1 | 6 |
| Vail180DB-12x10GP | 67" x 18" x 11.5" | 1 | 69 |
| Vail180DB-12x10HQ | 67" x 18" x 11.5" | 1 | 57 |
| Vail180DB-15x8GO | Poly Bag | 1 | 6 |
| Vail180DB-15x8GP | 67" x 18" x 11.5" | 1 | 68 |
| Vail180DB-15x8HQ | 67" x 18" x 11.5" | 1 | 56 |
| Vail180DB-15x9GO | Poly Bag | 1 | 7 |
| Vail180DB-15x9GP | 67" x 18" x 11.5" | 1 | 71 |
| Vail180DB-15x9HQ | 67" x 18" x 11.5" | 1 | 57 |
| Vail180DB-15x10GO | Poly Bag | 1 | 8 |
| Vail180DB-15x10GP | 67" x 18" x 11.5" | 1 | 73 |
| Vail180DB-15x10HQ | 67" x 18" x 11.5" | 1 | 57 |
| Vail180DB-20x8GO | Poly Bag | 1 | 8 |
| Vail180DB-20x8GP | 67" x 18" x 11.5" | 2 | 86 |
| Vail180DB-20x8HQ | 67" x 18" x 11.5" | 2 | 70 |
| Vail180DB-20x9GO | Poly Bag | 1 | 9 |
| Vail180DB-20x9GP | 67" x 18" x 11.5" | 2 | 97 |
| Vail180DB-20x9HQ | 67" x 18" x 11.5" | 2 | 79 |
| Vail180DB-20x10GO | Poly Bag | 1 | 10 |
| Vail180DB-20x10GP | 67" x 18" x 11.5" | 2 | 93 |
| Vail180DB-20x10HQ | 67" x 18" x 11.5" | 2 | 73 |
| Vail180DB-25x8GO | Poly Bag | 1 | 10 |
| Vail180DB-25x8GP | 67" x 18" x 11.5" | 2 | 102 |
| Vail180DB-25x8HQ | 67" x 18" x 11.5" | 2 | 82 |
| Vail180DB-25x9GO | Poly Bag | 1 | 11 |
| Vail180DB-25x9GP | 67" x 18" x 11.5" | 2 | 107 |
| Vail180DB-25x9HQ | 67" x 18" x 11.5" | 2 | 85 |
| Vail180DB-25x10GO | Poly Bag | 1 | 13 |
| Vail180DB-25x10GP | 67" x 18" x 11.5" | 2 | 211 |
| Vail180DB-25x10HQ | 67" x 18" x 11.5" | 2 | 85 |
| Vail180DB-30x8GO | Poly Bag | 1 | 12 |
| Vail180DB-30x8GP | 67" x 18" x 11.5" | 2 | 118 |
| Vail180DB-30x8HQ | 67" x 18" x 11.5" | 2 | 96 |
| Vail180DB-30x9GO | Poly Bag | 1 | 14 |
| Vail180DB-30x9GP | 67" x 18" x 11.5" | 2 | 122 |
| Vail180DB-30x9HQ | 67" x 18" x 11.5" | 2 | 98 |
| Vail180DB-30x10GO | Poly Bag | 1 | 15 |
| Vail180DB-30x10GP | 67" x 18" x 11.5" | 2 | 127 |
| Vail180DB-30x10HQ | 67" x 18" x 11.5" | 2 | 97 |



SETUP INSTRUCTIONS

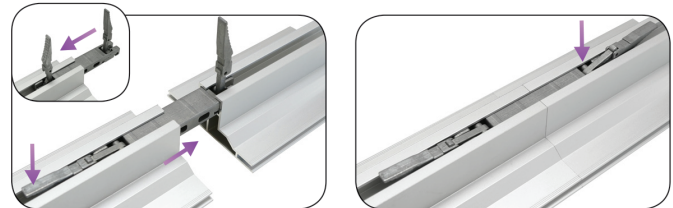


1. Corner Locks



With both levers up, slide into the two outer channels of the extrusion! Then slide the side extrusion onto the Tool Free Connectors. Press all levers down to secure.

2. Split Connectors*



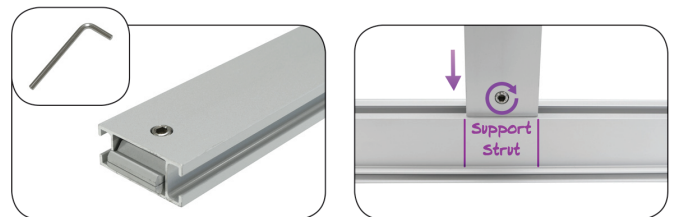
With both levers up, slide locks into the outer channels of the extrusion. Then attach other extrusion onto the Tool Free Split Connectors. Press all levers down to secure.
*Split connector quantities will vary depending on with of frame.

3. Strut Split Connectors



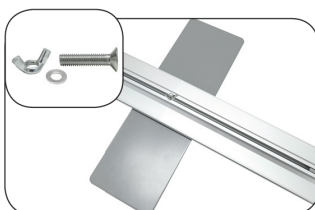
Remove screws from split connector and insert into one end of the strut. Align hole on strut with connector and then Insert screws and tighten with provided allen key. Repeat process for other side of the strut to complete assembly.

4. Strut Connection*



Make sure end locks are in the closed position (turn screw counterclockwise to close) and then insert into channel on frame or strut it will be connected to. Tighten screw with provided tool to lock the strut in place.
*Strut quantities will vary depending on with of frame.

5. Bottom Foot Installation

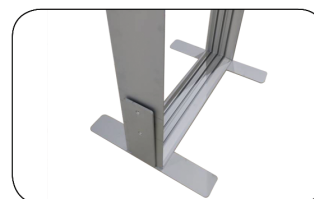


Bottom Foot

- Remove wing-nuts from bolts.
- Align feet holes with holes on bottom extrusion.
- Replace wing-nuts and tighten by hand or use allen key provided.

*Foot quantities will vary depending on with of frame.

6. Side Mount Foot Installation



Side Mount Foot

- Remove wing-nuts from bolts.
- Align feet holes with holes on the bottom of the vertical extrusion.
- Replace wing-nuts and tighten by hand or use allen key provided.