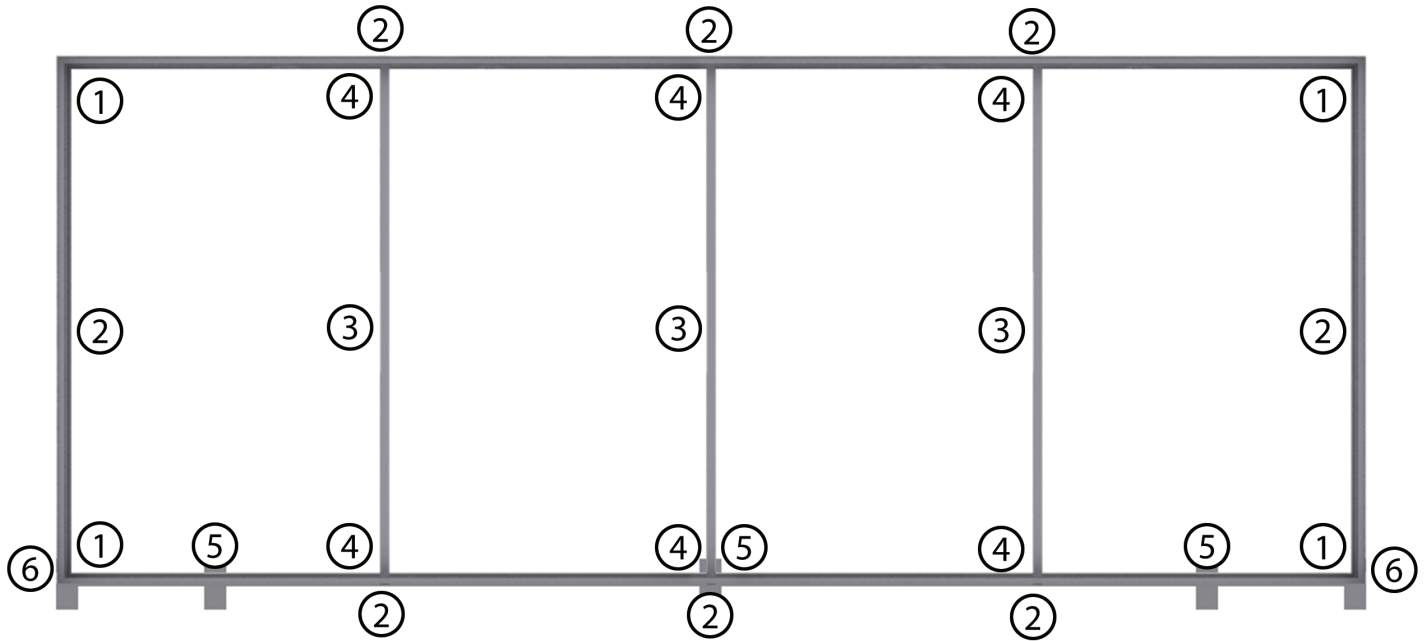




Setup Instructions

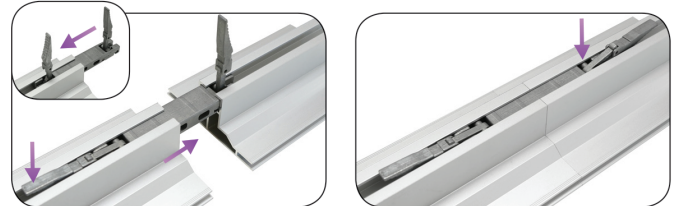


1. Corner Locks



With both levers up, slide into the two outer channels of the extrusion! Then slide the side extrusion onto the Tool Free Connectors. Press all levers down to secure.

2. Split Connectors*



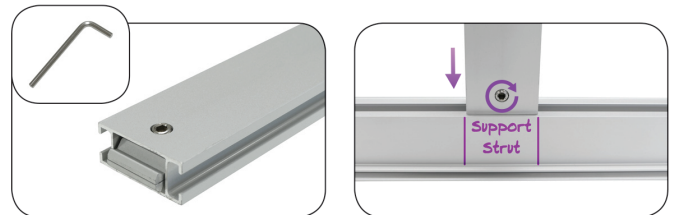
With both levers up, slide locks into the outer channels of the extrusion. Then attach other extrusion onto the Tool Free Split Connectors. Press all levers down to secure.
*Split connector quantities will vary depending on with of frame.

3. Strut Split Connectors



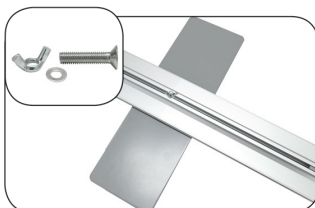
Remove screws from split connector and insert into one end of the strut. Align hole on strut with connector and then Insert screws and tighten with provided allen key. Repeat process for other side of the strut to complete assembly.

4. Strut Connection*



Make sure end locks are in the closed position (turn screw counterclockwise to close) and then insert into channel on frame or strut it will be connected to. Tighten screw with provided tool to lock the strut in place.
*Strut quantities will vary depending on with of frame.

5. Bottom Foot Installation



Bottom Foot

- Remove wing-nuts from bolts.
- Align foot holes with holes on bottom extrusion.
- Replace wing-nuts and tighten by hand or use allen key provided.

*Foot quantities will vary depending on with of frame.

6. Side Mount Foot Installation



Side Mount Foot

- Remove wing-nuts from bolts.
- Align foot holes with holes on the bottom of the vertical extrusion.
- Replace wing-nuts and tighten by hand or use allen key provided.