

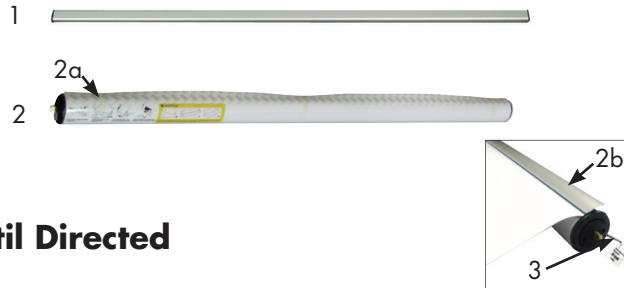
Superb Graphic Kit

Scan to view Product Instructional Video or visit:
www.creativeDisplaysite.com/SuperbRetractor.html



Product Parts

- 1 - Banner Rail
- 2 - Graphic Roller
 - 2a - Leader
 - 2b - Snap Rail
- 3 - Pin



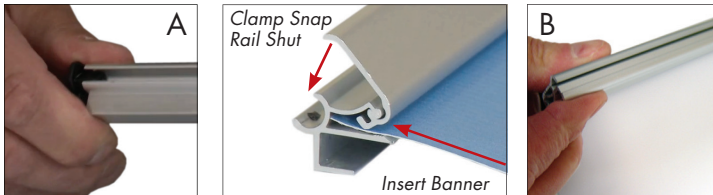
***Do Not Pull Pin Until Directed**



Banner Install

Step 1

Remove all of the product parts and place, along with the banner, on a clean flat surface. Remove both end caps (A) from the Banner Rail (1) and snap the Banner Rail (1) open. Fully insert the top edge of the Banner into the groove of the Banner Rail (1) and snap it shut (B). Replace end caps.



Step 2

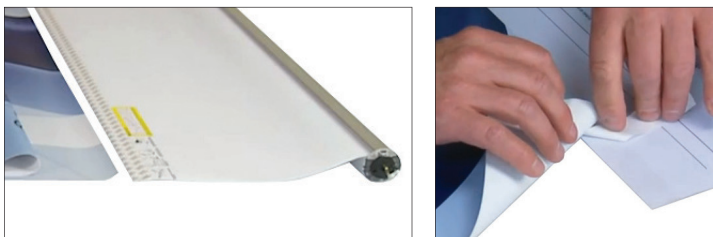
Press the yellow buttons on the side of the Base to open the lid and remove the old Graphic Roller (2).



Tape Leader Install

Step 3

Lay the banner flat, printed side up. Align the bottom of the banner to the adhesive strip on your Leader (2a). Remove the protective paper from the adhesive and firmly press the bottom of the banner onto the adhesive, and be sure to smooth out any bubbles or wrinkles.



Step 4

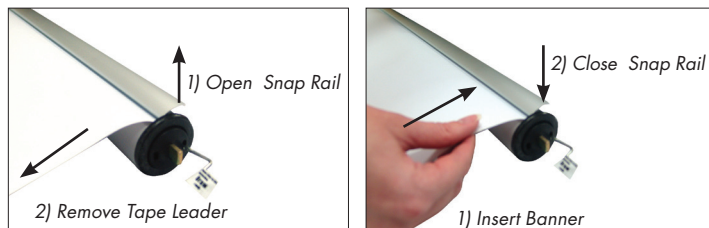
Place the Graphic Roller (2) back into the Base and close the lid. Maintain tension on the banner while slowly removing the Pin (3). Allow the banner to gently roll into the canister. **Save the pin for future graphic changes.**



Internal Snap Rail Install

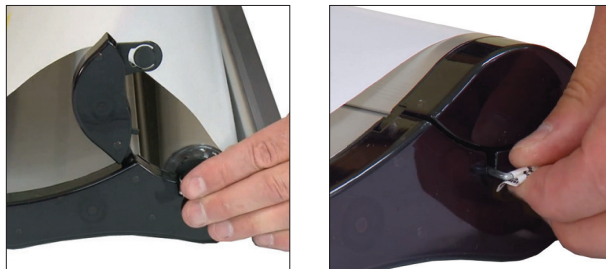
Step 3

Open the Snap Rail (2b) on the Graphic Roller (2). Remove the Leader (2a). Insert graphic into the Snap Rail (2b) and press down on the snap rail to secure.



Step 4

Place the Graphic Roller (2) back into the Base and close the lid. Maintain tension on the banner while slowly removing the Pin. Allow the banner to gently roll into the canister. *Save the pin for future graphic changes.*



Re-tensioning Banner



Step 1

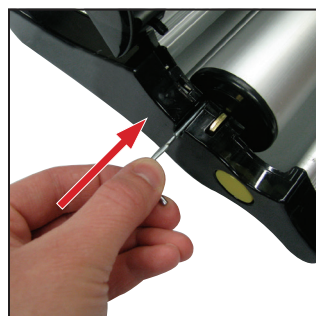
If the tension is released from the cartridge it must first be built back up before use.

Remove cartridge from base (A). Remove banner from cartridge by lifting up on pinch bar. Once banner is removed press the pinch bar closed on the cartridge, and place inside the open base (A).



Step 2

Once cartridge is inside the base (A), roll the cartridge away from you towards the back of the base (A), about 30 times.



Step 3

Replace the pin (D) in the left side of the cartridge to hold the tension. Once the pin (D) is in you can remove the cartridge from the base (A).

Re-tensioning Banner Instructions (Continued)



Step 4

Insert new banner into cartridge by sliding bottom edge of banner into pinch rail slot. Once banner is fully inserted firmly close pinch rail. Roll banner around cartridge tightly.



Step 5

Insert cartridge and banner back into base (A). Make sure top rail on banner is out of the base (A) slightly as you close the top lid.

Remove pin (D) and display your banner.

Storage

Store unused graphic cartridge and banner in a cool, dry place, away from direct sunlight.

Care

To clean, wipe with damp cloth.

Warranty Information: All products are designed to provide the user with a cost-effective and durable product. Standard warranty is a 'one year parts and labor' warranty which warrants product against defects in material and workmanship. It does not cover damage due to accidents, abuse, or normal wear and tear. Products found to be defective will be replaced or repaired at factory's discretion.