



Product Parts

Important: Before you begin please count and inspect all pieces.

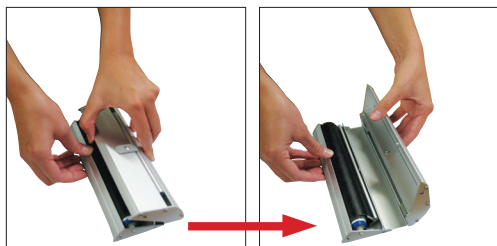
1 - Base with Retractable Banner (A)



Banner Display Set-Up

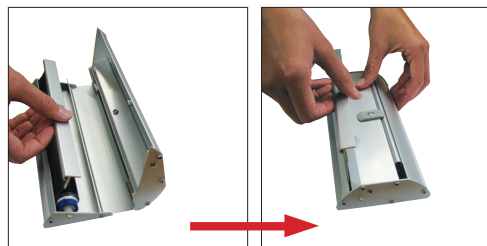
Step 1

Carefully pry open the base (A).



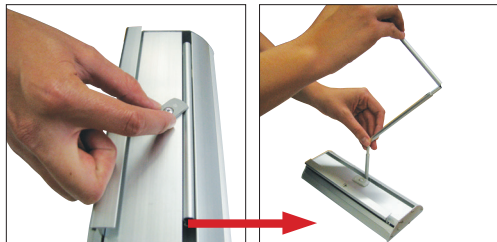
Step 2

Once open, lift out the top bar of the banner. With the top bar out, close the base.



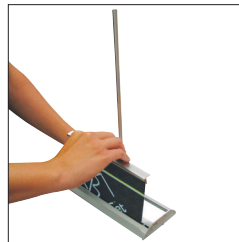
Step 3

Slide the pole stop horizontal to the base to release and assemble the tension pole.



Step 4

Slowly lift up and pull the banner out of the base.



Step 5

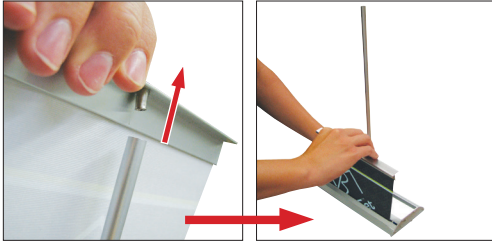


Insert the top bar into the top of the tension pole.

Display Disassembly

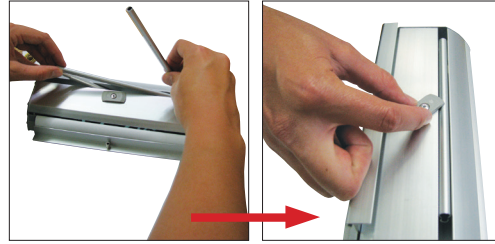
Step 1

Remove banner from pole and slowly retract banner to the base.



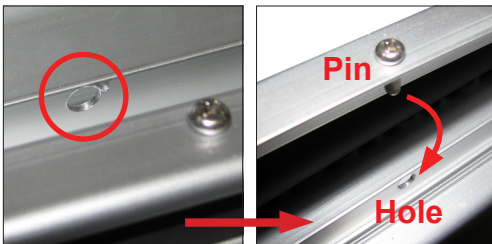
Step 2

Disassemble pole, and slide back into compartment in the base. Turn the pole stop to lock it in.



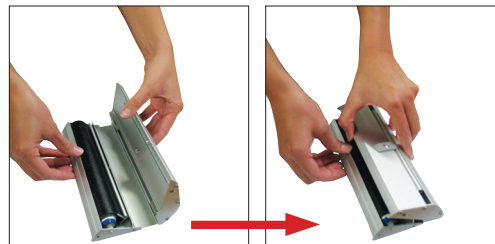
Step 3

Flip open base cover. Insert pin found on banner top rail into small hole on interior metal, just behind banner roll.



Step 4

Carefully close base cover.



Storage

Store in shipping box, in cool, dry place, away from direct sunlight.

Care

Spot clean with damp cloth.

Warranty Information: All products are designed to provide the user with a cost-effective and durable product. Standard warranty is a 'one year parts and labor' warranty which warrants product against defects in material and workmanship. It does not cover damage due to accidents, abuse, or normal wear and tear. Products found to be defective will be replaced or repaired at factory's discretion.