

Gemini
20' x 20' Truss System
Dye Sub Printed

TEMPLATE IS @ 1/2 SCALE

Panels GE1-A, GE3-A, GE5-A, GE7-A,
GE1-B, GE3-B, GE5-B, GE7-B:
Total Graphic Area: 43.5" w x 41.75" h
Finished Size: 39.5" w x 37.75" h
Visual Size: 37.5" w x 35.75" h

Panel GE1-C and GE-D:
Total Graphic Area: 97.75" w x 41.75" h
Finished Size: 93.75" w x 37.75" h
Visual Size: 93.75" w x 37.75" h

Panels GE2-A, GE4-A, GE6-A, GE8-A, GE2-B,
GE4-B, GE6-B, GE8-B:
Total Graphic Area: 43.5" w x 87.75" h
Finished Size: 39.5" w x 83.75" h
Visual Size: 37.5" w x 81.75" h

Template requires 1" bleed around the
perimeter (2" around the perimeter when
scaled to 200% and printed)

FS = Graphic is front side mounted
(3/4" w velcro is applied to the back
of the panel)

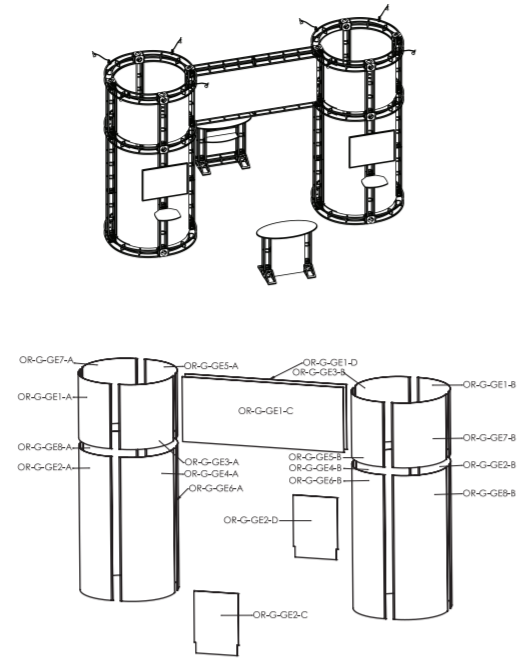
BS = Graphic is back side mounted
(3/4" w velcro is applied to the front
of the panel)

Notching = 7/8" square that is cut into the
appropriate location.

Hinging = 3/4" strip of material that is created
by notching the graphic. Allows two graphics
to share the same extrusion corner.

General Art Guidelines:

- CMYK Color Mode
- All Solid Coated Pantone colors should
be called out in the art as spot colors
- Embed all images and support files
- Resolution must be 200-240 ppi @
1/2 size, 100-120ppi @ 100% size
- All fonts must be created to outlines
- Do not scale artboard
- Background color/images must
bleed to the edge of artboard
- Do not use spot colors from template
in your artwork as they will not print



BS

OR-G-GE1-A

BS
OR-G-GE2-A

— bleed area
— trim line

BS

OR-G-GE3-A

BS

OR-G-GE4-A

BS

OR-G-GE5-A

BS

OR-G-GE6-A

BS

OR-G-GE7-A

BS
OR-G-GE8-A

gray area will
be obstructed
once finished
and mounted

BS

OR-G-GE1-B

BS

OR-G-GE2-B

BS

OR-G-GE3-B

BS

OR-G-GE4-B

BS

OR-G-GE5-B

BS

OR-G-GE6-B

BS

OR-G-GE7-B

BS
OR-G-GE8-B

gray area will
be obstructed
once finished
and mounted

FS

OR-G-GE1-C

panel is notched $7/8''$
in all corners

FS
OR-G-GE1-D

panel is notched $7/8''$
in all corners