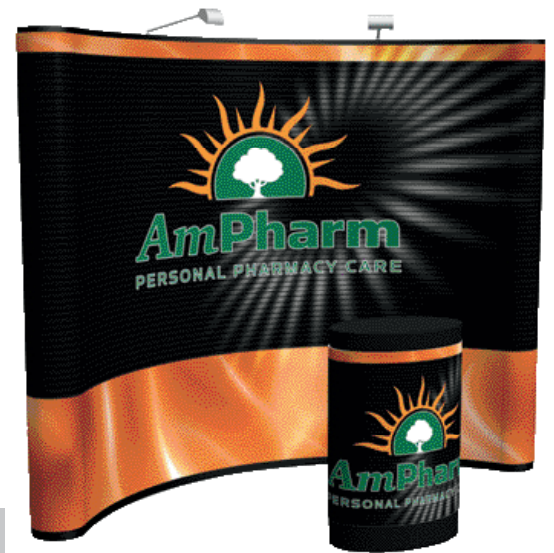


Congratulations on the purchase of your Premium Pop-Up Display.

Owner's Manual

- Includes:
 Parts List
 Assembly Instructions
 Disassembly Instructions
 Storage Instructions
 Care Instructions
 Warranty Information

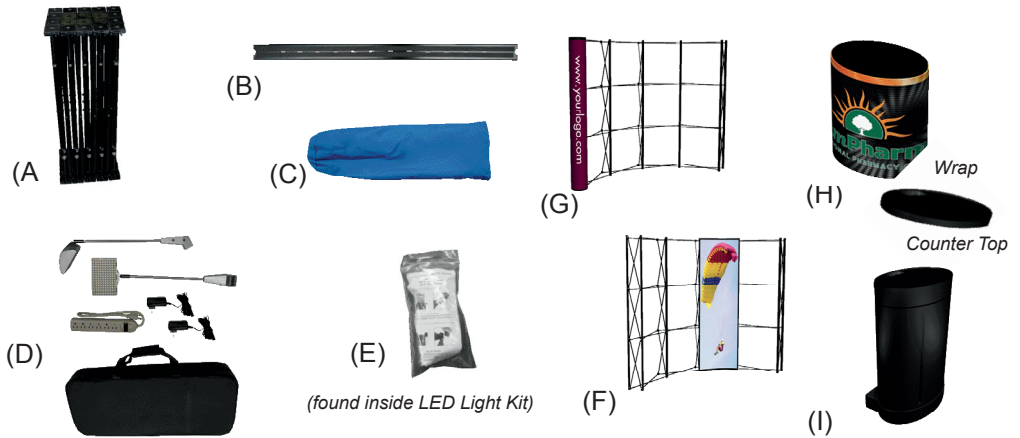
Please read all of the information carefully and contact your distributor or supplier with any questions.



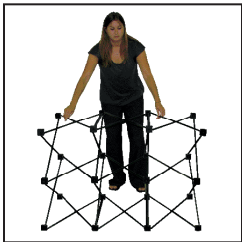
Parts List

Important: Before you begin please count and inspect all pieces.

- 1 - 12-quad curved frame (A)
- 21 - Magnet Bars (B)
- 1 - Hardware Bag (C)
- 1 - Double LED Light Kit (D)
- 1 - Universal LED Light Clip Kit (E)
- 4 - Mural Center Panels (F)
- 2 - Mural End Panels (G)
- 1 - Graphic Case-to-Counter Kit (H)
- 1 - Oval Shipping Case w/wheels (I)

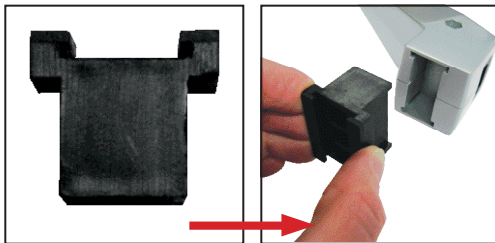


Assembly Instructions



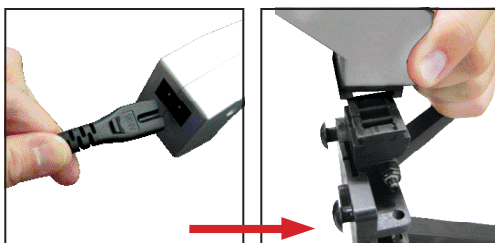
Step 1

Remove frame (A) from case. Standing in front or behind expand the frame (A) by pulling up from the middle of the frame.



Step 2

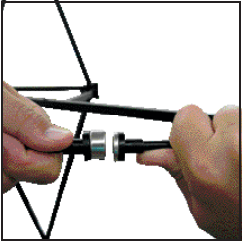
Select the Universal LED Light Clip, item # 150045, (E) and insert into the base of LED Light (D).



Step 3

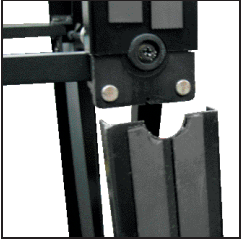
Plug power cord from the light kit into base of light (D). Then slide light (D) with clip attachment inserted, onto light clip on the top of the frame (A). If you cannot locate the light clips on the frame, check to make sure the frame is not upside down. Repeat for second light and finished expanding frame.

Assembly Instructions (cont.)



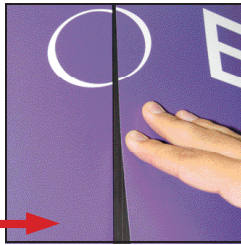
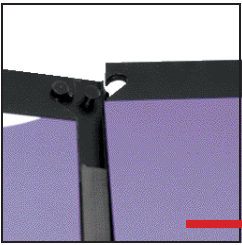
Step 4

Secure the stability of the unit by engaging the MAGNAFORCE™ locking bars into place.



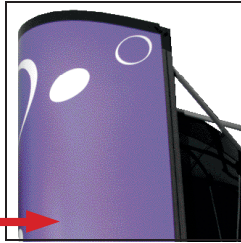
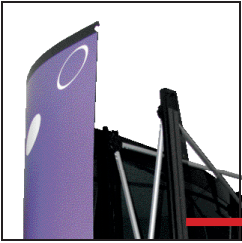
Step 5

Beginning at the bottom and working up, attach the magnet bars (B) by aligning the cut-outs on the bars with the center of the hub on the frame (A). They will snap into place. Apply to the front, and the two back corners.



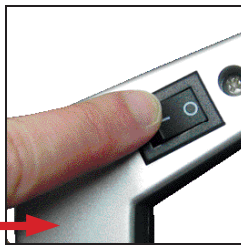
Step 6

Remove panels from protective sleeve. NOTE: Place sleeves in shipping case. They will be used for storage. Hang the center mural panels (F) from the hanging pins at top, then attach them to the magnet bars (B) by aligning the magnetic strips.



Step 7

Hang the mural end panels (G). Curl them around the corners and attach them to the magnet bars (B) in front and in back.



Step 8

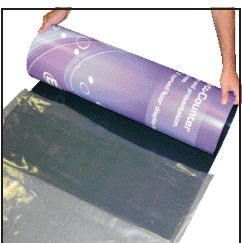
Plug lights (D) into power source and turn the switch on.



Step 9 (Case-to-Counter Kit)

Place the wrap part of the case-to-counter kit (H) around the oval shipping case (I) and secure with Hook and loop. Place the oval counter top part of the case-to-counter kit (H) in the groove on top of the shipping case (I).

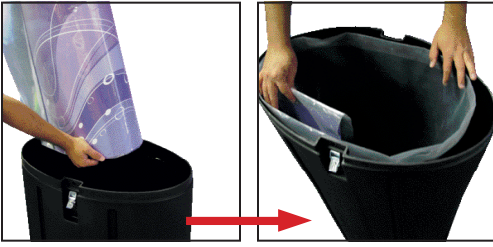
Disassembly Instructions



Step 1

Remove all panels and carefully roll them up *fabric/graphic side out* into clear protective sleeves.

Disassembly Instructions (cont.)



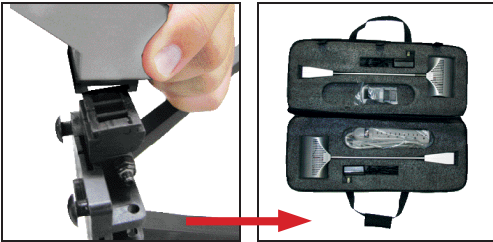
Step 2

Carefully place rolled panels in shipping case (H), ***fabric/graphic side out***. Roll panels so they are along the perimeter of case.



Step 3

Remove all magnet bars (B) from frame (A), and place in hardware bag (C).



Step 4

Disengage the locking bars (see Assembly Step 4). Retract the frame half way and remove lights (D) before fully retracting the frame. Leave clip attachment in light, for quick set-up next time. Repack the lights in foam lined carrying case.



Step 5

Fully retract frame and place it, along with the light case and hardware bag (C), in the open center area inside the shipping case (I).

Storage Instructions



Store in shipping case (I), in a cool, dry place.

Care Instructions

Spot clean with damp cloth.

Warranty Information

All products are designed to provide the user with a cost-effective and durable product. Standard warranty is a 'one year parts and labor' warranty which warrants product against defects in material and workmanship. It does not cover damage due to accidents, abuse, or normal wear and tear. Products found to be defective will be replaced or repaired at factory's discretion. Lifetime warranty on frame and hardware.