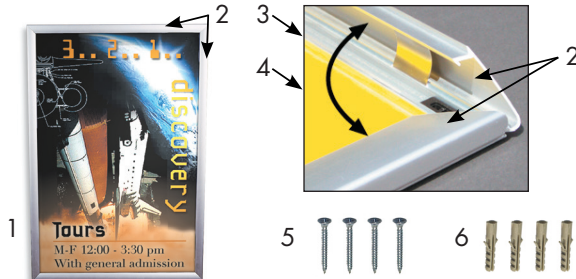


Front Load Frame

Product Parts

- 1 - Frame
- 2 - Snap Edge
- 3 - Graphic Edge
- 4 - Protective Graphic Film
- 5 - Phillips Screws (x4)
- 6 - Wall Anchors (x4)



Display Set-Up

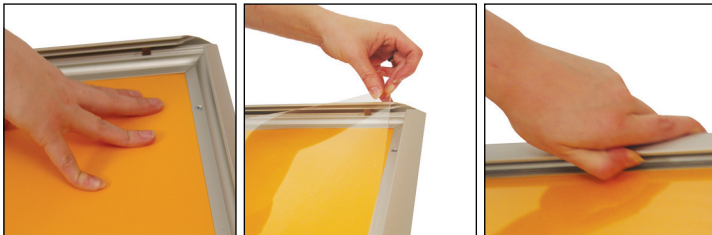
Step 1

Take all parts out of the box.

Lay the Frame (1) on a clean, flat surface.

Step 3

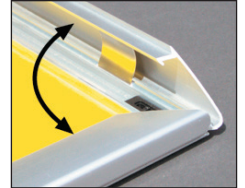
Lay the Graphic evenly between the Graphics Edges (3). Place the Protective Graphic Film (4) on top of the Graphic. Close all 4 Snap Edges (2).



Step 2

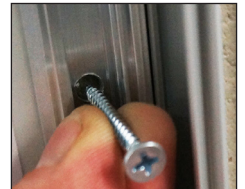
Open all 4 Snap Edges (2).

Remove the Protective Graphic Film (4) and peel off the protective sheeting on the Protective Graphic Film (4).



Step 4

To attach frame to wall, open the snap edges (see step 2) and mark on the wall through the holes on the frame. Set Frame aside. Pre-drill marked holes and insert Wall Anchors (6). Align the frame on the wall and insert the Screws (5) into the Wall Anchors (6) until snug.



DO NOT OVER TIGHTEN

Storage

Place all product parts into Carry Case and store in a cool dry location.

Care

To clean, wipe with damp cloth.

Warranty Information: All products are designed to provide the user with a cost-effective and durable product. Standard warranty is a 'one year parts and labor' warranty which warrants product against defects in material and workmanship. It does not cover damage due to accidents, abuse, or normal wear and tear. Products found to be defective will be replaced or repaired at factory's discretion.