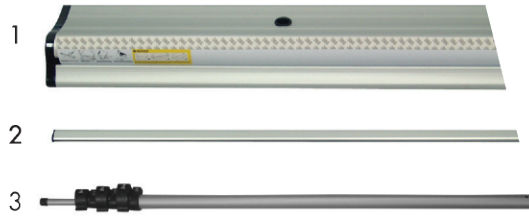


Superb Telescoping Retractor

Product Parts

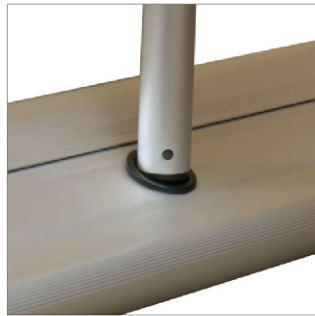
- 1 - Base
- 2 - Snap Banner Rail
- 3 - Flip Lever Telescoping Pole



Display Set-Up

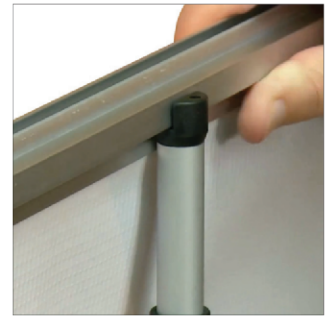
Step 1

Assemble the shock cord portion of the Telescoping Pole (3). Insert the bottom of the Telescoping Pole into the hole in the center of the Base (1). Ensure the pole is seated completely into the bottom of the base.



Step 2

Stand facing the back of the Base (1) and gently lift the Snap Banner Rail (2) up. Gently tilt the Base back if needed to attach the Telescoping Pole (3) top connector into the rear groove on the Snap Banner Rail where the "insert" sticker is located.



Step 3

To adjust the height, open the Flip Lever on the Telescoping Pole (3) and adjust to the desired height, close the lever to secure your pole height.



Do not exceed 78" high.

Storage & Care

Place all product parts into Carry Case and store in a cool dry location. To clean non-graphic hardware, wipe with damp cloth.

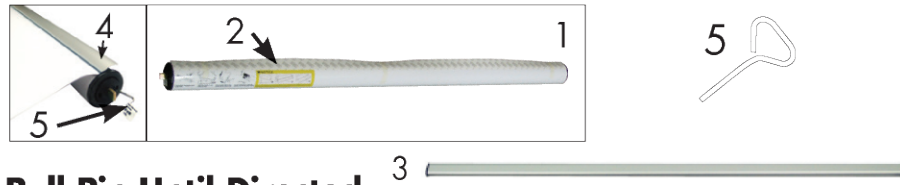
Superb Telescoping Retractor

Banner Install/Replacement ONLY

2-person assembly recommended

Product Parts

- 1 - Graphic Roller
- 2 - Leader
- 3 - Snap Banner Rail
- 4 - Internal Snap Rail
- 5 - Pin



***Do Not Pull Pin Until Directed**

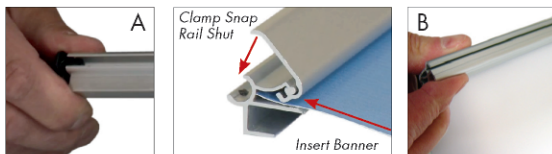
Graphic Removal

Locate the Tension Pin (5) on your retractor. Hold the Base (1) firmly and carefully pull the banner completely out of the Base to expose the leader beyond the original banner. With tension on the banner, insert the Pin into the hole on the side of the Base to prevent the banner from retracting (see below for Pin placement). If done correctly, there will be no tension on the banner and it can be removed from the leader. Follow Banner Installation.

Banner Installation

Step 1

Remove both End Caps from the Snap Banner Rail (3) and snap the clamp open. Fully insert the top edge of the banner into the groove of the Snap Banner Rail (3)



Step 2

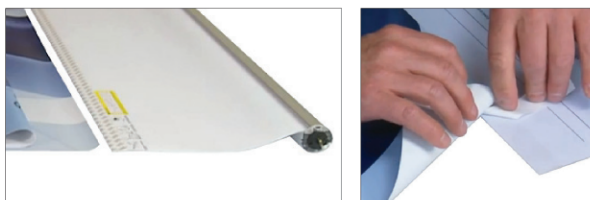
Press the yellow buttons on the side of the Base to open the lid. Remove the Graphic Roller (1).



Tape Leader Install

Step 1

Lay the banner flat, printed side up. Align the bottom of the banner to the adhesive strip on your Leader (2). Remove the protective paper from the adhesive and firmly press the bottom of the banner onto the adhesive, and be sure to smooth out any bubbles or wrinkles.



Step 2

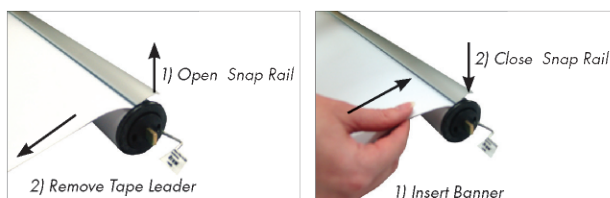
Place the Graphic Roller (1) back into the Base and close the lid. Maintain tension on the banner while slowly removing the Pin (5). Allow the banner to gently roll into the canister. *Save the pin for future graphic changes.*



Internal Snap Rail Install

Step 1

Open the Snap Rail (3) on the Graphic Roller (1). Remove the Leader (2). Insert graphic into the Snap Rail and press down on the snap rail to secure.



Step 2

Place the Graphic Roller (1) back into the Base and close the lid. Maintain tension on the banner while slowly removing the Pin. Allow the banner to gently roll into the canister. *Save the pin for future graphic changes.*



Re-tensioning Banner



Step 1

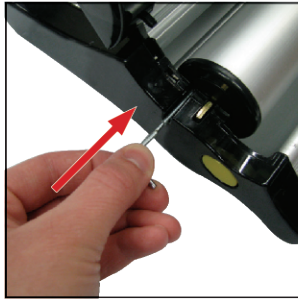
If the tension is released from the cartridge it must first be built back up before use.

Remove cartridge from base. Remove banner from cartridge by lifting up on pinch bar. Once banner is removed press the pinch bar closed on the cartridge, and place inside the open base.



Step 2

Once cartridge is inside the base, roll the cartridge away from you towards the back of the base, about 30 times.



Step 3

Replace the pin in the left side of the cartridge to hold the tension. Once the pin is in you can remove the cartridge from the base.



Step 4

Insert new banner into cartridge by sliding bottom edge of banner into pinch rail slot. Once banner is fully inserted firmly close pinch rail. Roll banner around cartridge tightly.



Step 5

Insert cartridge and banner back into base. Make sure top rail on banner is out of the base slightly as you close the top lid.

Remove pin and display your banner.